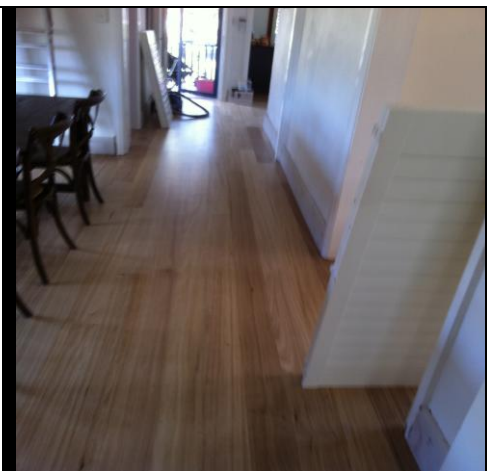


Select Grade Southern Beech Flooring



NASH
TIMBERS



Southern Beech Flooring

SOUTHERN BEECH

SOUTHERN BEECH.

COLOUR- Pale brown, sapwood is paler with a hint of pink

WIDTH- 80mm to 130mm

GRAIN – Straight or interlocked

GUM VEIN– Frequent

FIGURE - Interlocking

TEXTURE- Medium & even

HARDNESS (JANKA RATING)- 6.4

DURABILITY – Class 4

APPLICATION – Flooring

VERY SIMILAR TO MESSMATE



SOUTHERN BEECH FLOORING

ASK ABOUT OUR UNIQUE



Species	Visible Gum Vein	Colour Variation	Janka Hardness	Durability	Board Width	Fire Retardant
North Coast Blackbutt	More frequent	Cream to honey brown	9.1	2	80mm to 220mm	Best
Coastal Spotted Gum	Frequent	Light brown to brown	11.0	2	80mm to 210mm	Best
Red Ironbark	Rare	Light Red to red brown	14.0	1	80mm to 180mm	Best
Grey Ironbark	Rare	Pale brown to dark red, variable	14.0	1	80mm to 180mm	Best
Grey Box	Rare	White to light brown(mid brown)	15.0	1	80mm to 180mm	Best
Jarra	Frequent	Rich dark red brown	8.5	2	80mm to 130mm	No
Sydney Blue Gum	More Frequent	Pink to pink brown	9.0	3	80mm to 130mm	No
American White Oak	Never	Light brown with pinkish to grey	6.0	3	80mm to 220mm	Poor
Tallowood	Never	Pale straw to dark brown	8.6	1	60mm to 210mm	N/A
Brushbox	Rare	Pink to brown sapwood present	9.1	3	80mm to 180mm	N/A
Grey Gum	Rare	Red to red brown	1	1	80mm to 180mm	Best
Tasmanian Oak	Frequent	Pale blonde to brown	5.5	4	80 mm to 133mm	Poor
Plantation Hardwood	Frequent	Rose and blonde	8.0	2	80mm to 103mm	N/A

(02) 9337 6800 /info@nashtimbers.com.au/nashtimbers.com.au